

# USB Configuration Module

Designed, manufactured and supported by:



Green Lane, Business Park, Green Lane  
Tewkesbury Glos. G20 8DE. UK  
Tel: +44 (0)1684 296818 Fax: +44 (0)1684 293746  
Email: [support@status.co.uk](mailto:support@status.co.uk)

Every effort has been taken to ensure the accuracy of this document, however we do not accept responsibility for damage, injury, loss or expense resulting from errors and omissions, and we reserve the right of amendment without notice

## 1.0 DESCRIPTION

1.1 The USB Config unit provides a fully input/output isolated USB powered interface between a Windows computer and Status Instruments line of USB loop configurable temperature and process instruments.

1.2 Using a standard PC USB port the module enables the user to interrogate their equipment, including re-ranging and re-configuration using a simple Windows based interface.

## 2.0 RECEIVING AND UNPACKING

2.1 Please inspect the packaging and instrument thoroughly for any signs of transit damage. If the instrument has been damaged, please notify your supplier immediately.

Item	
USB Configuration Module	●
Cable USB A/M to Mini B/M	●
Cable 3.5 mm Socket to Pins	●
Cable 3.5 mm Socket to Crocodile Clips	●
Pen Drivewith M-config s/w	Optional
Carry Case	Optional

## 3.0 PRECAUTIONS

3.1 **Do not** allow the two terminal / crocodile clip connections on the output of the module to short together, the module provides 24V DC across these terminals in order to power the unit under configuration. Whilst the USB Config is protected by a self-resetting fuse certain models of PC are not protected against high current draw from their USB ports and damage could be caused if the user is not careful.

3.2 **Do not** attempt to configure anything but Status Instruments Ltd USB configurable equipment; doing so could damage the USB Configurator as well as the host computer.

3.3 **Do not** use the USB Configuration unit as a power supply, and ensure that it is not (accidentally or intentionally) used to power a process loop or any other equipment.

## 4.0 OPERATION

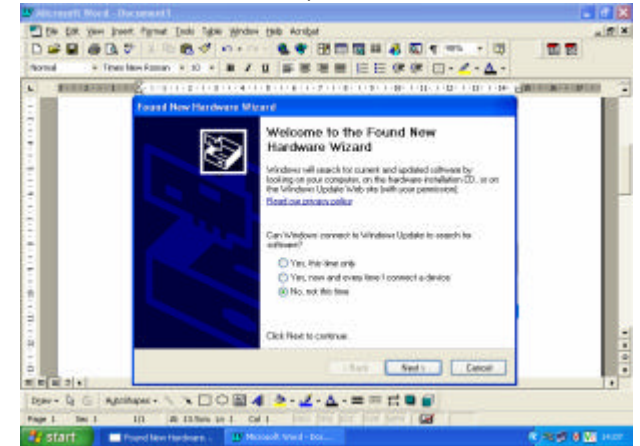
4.1 To use your USB Config module you will first need to install the relevant software (M-Config) which is available as a free download from <http://www.status.co.uk/downloads/index.htm>.

4.2 Unzip the download and run the M-Config exe file.

4.3 Follow the on screen instruction then restart the computer on completion of this installation.

4.4 On installing the software, connect the USB link module to the PC using the USB cable supplied. Your PC will now inform you that it has found new hardware and launch the "Found New Hardware" wizard. Depending on the version of Windows running you may have differing screens to the examples below.

4.5 If online select the option "No, not this time"



4.6 Select "Install from a list or specific location (Advanced)"

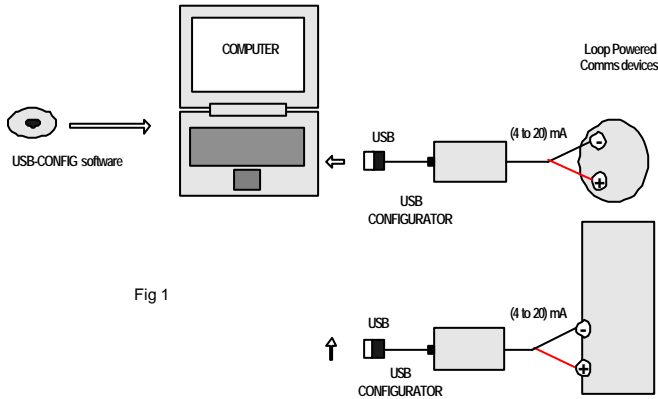
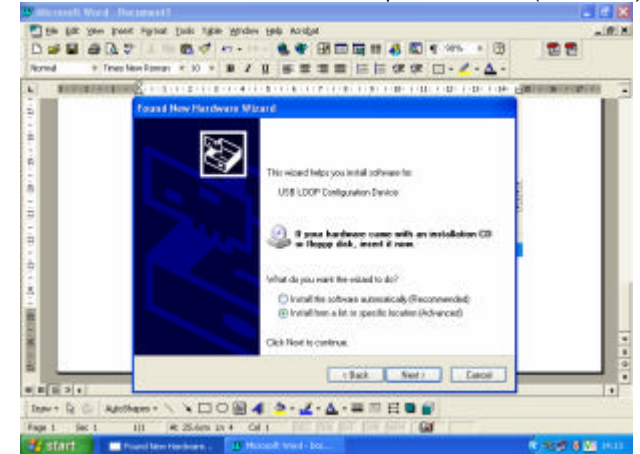
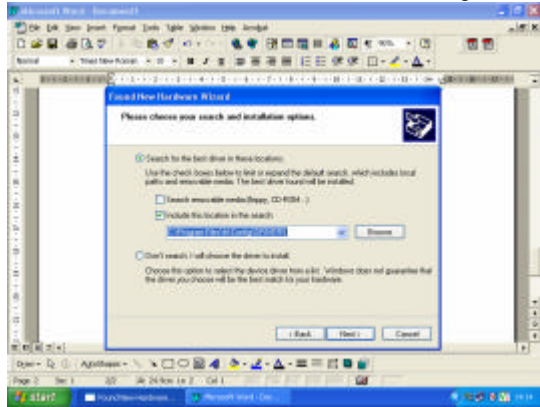


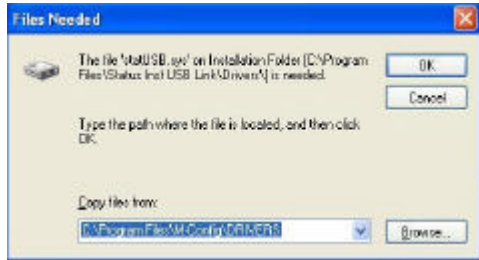
Fig 1

#### 4.7 Browse for the drivers folder "M-Config\drivers"



#### 4.8 Click "Next".

If you see the screen below browse to the same folder as for 4.7 and click "OK".

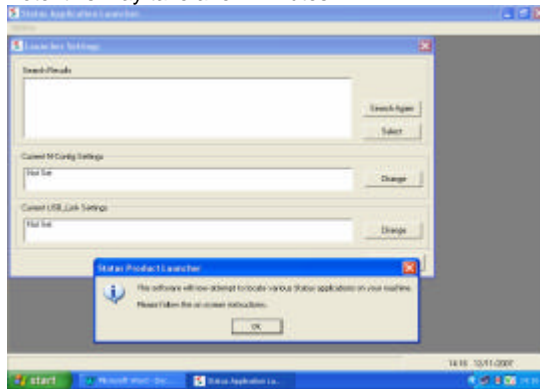


#### 4.9 Click "Finish".

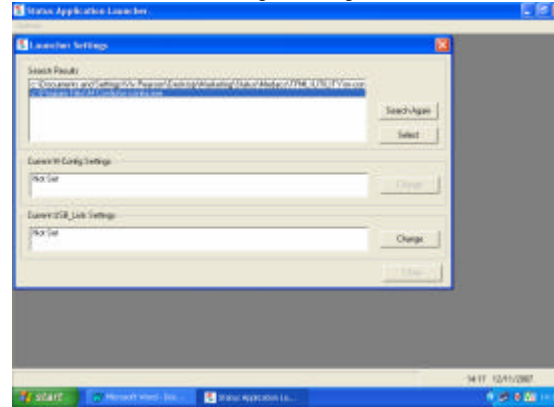
Double click the 'Status Application Launcher' icon on the desktop or select from the start menu.

#### 4.9 Click "OK" to configure the Launcher Settings.

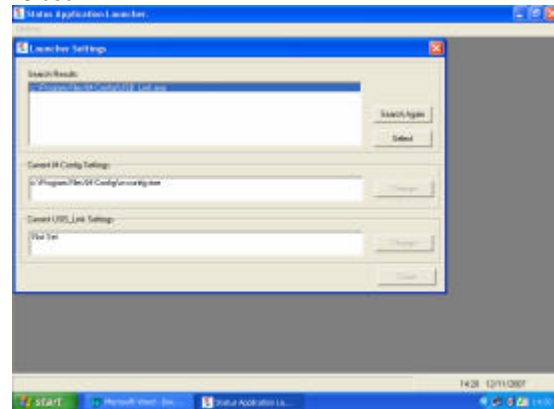
Note: this may take a few minutes.



#### 4.11 Select "M-Config\m-config.exe"



#### 4.12 Click "Select" and repeat for USB\_Link.exe, then click "Close"



#### 4.13 Use the Launcher to select the instrument you wish to configure by clicking on it. If you cannot find the device you wish to configure, contact your supplier.



4.14 The Launcher will start the software in the correct mode for the instrument you wish to configure. Alternatively you can run the "M-Config" or "USB Link" configuration programmes from the Windows start menu. Refer to the user guide for the instrument you intend to configure, this will tell you which software to choose.

4.15 Attach the instrument you wish to configure to the USB module via the appropriate leads (see Fig1), refer to the instrument's user guide for connection details. User guides for Status Instrument's products can be downloaded from <http://www.status.co.uk/downloads/index.htm>.

## 5.0 GENERAL INFORMATION

5.1 The USB Configuration module is powered completely from the USB port on your computer; you do not require an external power supply. The USB Configuration module will power the instrument connected to it during the configuration process. It is not recommended to leave the module plugged into a laptop computer for long periods of time when the laptop is running on batteries as this will effect battery live adversely, especially if an instrument is left connected to the configurator.

5.2 Further guides and information specific to configuring Status Instruments products can be downloaded from <http://www.status.co.uk/downloads/index.htm>.

5.3 If you have any questions regarding the configuration of Status Instruments equipment please contact your supplier.

5.4 Please see the Status Instruments website - <http://www.status.co.uk> for a wide range of temperature and process equipment with direct PC to instrument USB configuration, removing the need for a configuration module altogether.